

you can
Canon

DR-2080C

workgroup
document scanner

*You can speed up scanning
while saving significant space*



Archive everything easily with on-the-spot scanning

However small your workspace, with Canon's ultra compact workgroup scanner you can digitise all your paper documents easily. The highly economical and colour capable DR-2080C offers enhanced quality, speed and extremely reliable operation. While a rich range of practical functions ensures that it's always ready to meet your most demanding requirements.



YOU CAN PLACE IT ANYWHERE

Place the DR-2080C on a counter top, the corner of a desk or wherever you want. Canon's innovative and space-saving design ensures an ultra compact footprint. It takes up less than half the area of most other scanners in its class, whether on standby or in use. Making it ideal for bank or government office counters, shop fronts and all busy enterprises where instant document capture is essential in a small space.

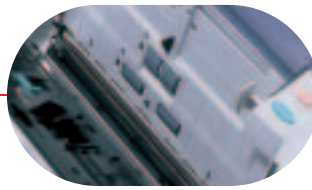
YOU CAN SCAN MORE QUICKLY

The DR-2080C delivers one of the fastest scanning speeds in the work-group category, at 20 pages per minute (A4 portrait, simplex, black and white, 200 dpi). It offers same speed simplex and duplex scanning for all paper sizes up to A4, with the added advantage of greyscale and colour capable scanning. So it can handle a wide range of work fast and efficiently – throughout numerous organisations and industries.



YOU CAN SCAN ACCURATELY

You benefit from an extremely high optical resolution for 600 dpi work-group scanners, to ensure consistently superior image output. The DR-2080C minimises image distortion, due to an innovative CIS sensor and lens array mechanism. This revolutionary design also cuts overall energy consumption, eliminates warm-up time and makes the scanner body far more compact.



'Retard roller' mechanism achieves highly reliable separation and feeding of documents

YOU CAN SCAN EASILY AND WITH TOTAL RELIABILITY

Plug and play simplicity, clear control buttons and a range of user-friendly features ensure effortless operation for everyone. Best of all, the durable and dependable DR-2080C guarantees highly reliable operation, day in and day out. Canon's unique 'retard roller' mechanism achieves highly reliable separation and feeding of documents for productive paper handling - while preventing any problems due to partial double feeding or dust damage. You can 'Scan Batch to Mail' or even to a PDF format

Bundled software for the DR-2080C includes ISIS™/TWAIN drivers and Scanning Utility 2000 - which offers you extensive scanning and saving functions, with two new features.

With 'Scan Batch to Mail', scanned images can be instantly attached to a new message for multiple sending, using your existing mail program.

Also scanned images can be saved in PDF format - in high compression or standard mode. OmniPage™ OCR software ensures full text OCR is also included. Thus fully optimising all your image application requirements.



SO COMPACT
IT FITS ON A COUNTER TOP



An array of device drivers maximises image quality and overall ease of use.



USER PREFERENCE - registers up to 20 scanning settings, for all your work.

TEXT ENHANCED MODE - ensures pencil and light text stands out legibly from any background.

SKIP BLANK PAGE - when scanning batches with both single and double-sided documents, blank pages are detected automatically and this data is discarded, without speed slowdown.

SKEW CORRECTION - this ensures a smooth paper flow, even with mixed paper sizes.

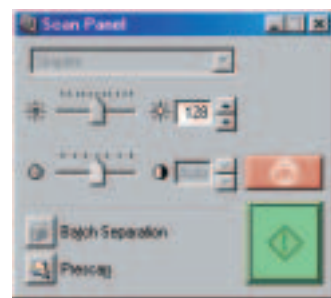
SCANNING SIDE SELECTION - when scanning a single-sided sheet you can select either side (sequence reverses when scanning multiple documents).

BORDER REMOVAL - converts black borders into white when documents less than the selected page size are scanned (file size remains same).

AUTO DETECTION - automatically detects the size of documents to be scanned.

PRE-SET GAMMA CURVE - offers an easy way for users to obtain desired images, exactly as required.

SCAN PANEL - a unique, virtual control panel on your PC screen lets you change scan settings easily, without stopping scanning for multiple dialogs.



PRE-SCAN - obtains the best image for a batch by adjusting brightness and contrast on the first scanned page - showing immediate results on screen.

DR-2080C Specifications

Type	Desktop sheetfed scanner	Feeding mode	Normal/Auto/Panel
Document feeding	Automatic sheet feeding	Interface	SCSI-2
Document sizes	Width: 55 - 216 mm Length: 70 - 355 mm up to 297mm when feeding multiple sheets at once	Image Compression	CCITT Group 4, JPEG, PDF, BMP, TIFF
Document thickness	Separation ON: 0.06 - 0.15 mm / Separation OFF: 0.05 - 0.2 mm	Device driver	ISIS & TWAIN
Feeder Capacity	50 sheets of fine quality paper or copier paper 10 sheets of stiff, soft or high friction paper	Utility Software	Scanning Utility 2000, ScanSoft®'s OmniPage™ SE (OCR)
Scanning element	Contact Image Sensor (CMOS)	Bundled SCSI Card	SCSI Card (Adaptec® AVA-2902E) SCSI Cable (Scanner end: SCSI-2 Half Pitch 50pin, Card end: D Sub 25pin)
Light source	LED (red, green and blue)	Other functions	Color Dropout, Deskew, Automatic Page Size Detection, Skip Blank Page, Border Removal, Prescan, Gamma Compensation, Batch Separation, User Preferences
Scanning modes	Resolutions (dpi): 600 x 600, 400 x 400, 300 x 300, 240 x 240, 200 x 200, 150 x 150, 100 x 100 Black & White: Error Diffusion, Text Enhanced (Simplex, Duplex in each mode) 8-bit grayscale: (Simplex, Duplex) 24-bit color: (Simplex, Duplex)	Power requirements	220 - 240V, 50/60HZ
Scanning speeds*	(A4 portrait, Binary or Grayscale): 200 x 200 dpi: 20 ppm (Simplex), 39 ipm (Duplex) 300 x 300 dpi: 11 ppm (Simplex), 21 ipm (Duplex) 400 x 400 dpi: 7 ppm (Simplex), 13 ipm (Duplex) 600 x 600 dpi: 3 ppm (Simplex), 7 ipm (Duplex) (A4 portrait, 24-bit Color): 100 x 100 dpi: 18 ppm (Simplex), 36 ipm (Duplex) 200 x 200 dpi: 7 ppm (Simplex), 13 ipm (Duplex) 300 x 300 dpi: 4 ppm (Simplex), 7 ipm (Duplex) 400 x 400 dpi: 2 ppm (Simplex), 4 ipm (Duplex) 600 x 600 dpi: 1 ppm (Simplex)	Power consumption	17W or less
		Dimensions (WxDxH)	Feed tray closed: 298 x 98.9 x 209.5 mm
		Weight	2.5kg (AC adapter not included)
		Options/Consumables	Exchange Roller Kit

*Scanning speeds can vary depending on PC configuration

All company and/or product names are trademarks and/or registered trademarks of their respective manufacturers in their markets and/or countries. Canon reserves the right to change specifications without notice.



you can
Canon

Canon Europa NV
Bovenkerkerweg 59-61
1185 XB Amstelveen
The Netherlands
www.canon-europa.com

Canon (U.K.) Limited
Woodhatch, Reigate
Surrey RH2 8BF
Tel. 01737 220 000
Fax 01737 220 022
www.canon.co.uk

Canon Electronics Inc.
1248, Shimokagemori, Chichibu-shi,
Saitama
369-1892, Japan
www.canon-elec.co.jp



English Edition 0031W843
© Canon Europa N.V., 2002 (0802)