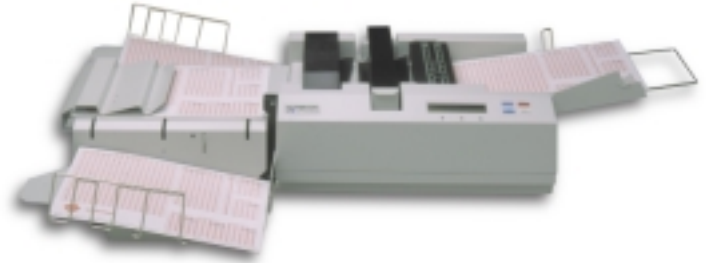




## INTRODUCING SCANMARK ES2800

HIGH GRADE TECHNOLOGY FOR EFFICIENT  
DATA COLLECTION.



### **SCANMARK ES2800**<sup>™</sup> OPTICAL MARK READER

#### **HUMAN RESOURCES**

Employee Surveys  
360-Degree Surveys  
Benefit Enrollments  
Applicant Tracking  
Employee Change of Status  
Payroll/Time Sheets

#### **RESEARCH AND EVALUATION**

Marketing Surveys  
Needs Assessments  
Program Evaluations  
Competitive Data Collection

#### **TESTING AND TRAINING**

Instructor Evaluations  
Performance Evaluations  
Course Enrollments  
Teacher In-services  
Student Tests

#### **HEALTHCARE**

Patient Satisfaction Surveys  
Medical Histories  
Training and Assessments  
Nurse Staffing Reports  
Continuing Ed Evaluations

Scantron's versatile ES2800 Optical Mark Reader (OMR) represents the latest technology designed for handling everyday data collection tasks. This new OMR technology, along with advanced paper handling features, makes the ES2800 the perfect choice for today's data entry challenges.

#### **EFFICIENT**

The ES2800 scans information directly from forms into the computer at up to 2,800 sheets per hour, ensuring a level of accuracy and efficiency unattainable through key entry. Productivity is further enhanced by the ES2800's automatic document feeder, which eliminates the need for hand feeding.

#### **VERSATILE**

A special output mechanism on the ES2800 allows forms to be sorted to different locations during the scanning process. For example: Based on operator-defined criteria, scanned forms can be sorted into two separate bins, while mis-marked or incomplete forms are rejected and stopped at the top of the output platform for removal by the

operator. Alternatively, rejected forms could be sent to one bin and scanned forms to the other.

To ensure data accuracy, the ES2800 allows the user to perform continuous, automatic readhead calibration and adjust mark sensitivity levels.

#### **INTELLIGENT**

Form definitions can be stored in the scanner's memory (even while the machine is off), eliminating the need to repeatedly download a definition.

#### **ADDITIONAL FEATURES**

An LCD panel displays the status of a job, while an interactive printer (optional) can print messages or serial numbers for instant form identification. Other options include a dual readhead (which simultaneously reads both sides of a form), as well as ink and bar code-readers.

With all this functionality in one machine, it's easy to see why the ES2800 is at the top of its class.

## FORMS TRANSLATION

ScanBook utility software allows the operator to create the form definitions necessary for an Optical Mark Reader to identify where mark positions are located on a form.

Form definitions are further utilized to determine how the data will be translated, organized, and saved so that it can be read by any software programs you may be currently using.

ScanBook simplifies the process of creating sophisticated data records through a user-friendly interface that requires no programming experience.

## SCANTRON SUPPORT

Like all Scantron products, the ES2800 is backed by nationwide maintenance and support.

## READER

Maximum Scanning Speed:	2,800 forms/hour
Maximum Scan Area:	48 x 108 marks
Read Technique:	Reflective read
Number of Readheads:	One
Readhead Channels:	40 or 48
Mark Discrimination:	100-level, user-set threshold and discrimination difference with 16-level mark darkness transmission
Marks:	Marks by No. 2 pencils, computer OMR pre-slugs, preprinted lithocode
Mark Shapes:	Rectangles, ovals and circles
Input:	Automatic Document Feeder (ADF) - 150 sheets, automatic double-sheet detection
Output:	180 in each bin
Dimensions, L x W x H:	31" x 14" x 6" (79 x 36 x 15 cm)
Weight:	17 lb. (7.7 kg)
Power Requirement:	110 - 240 VAC, 50/60 Hz
Noise:	Office environment, <55dB
Calibration:	Automatic, on-line, continuous self-calibration

## OPERATING CONDITION

Temperature:	45° - 90° F (7° - 32° C)
Relative Humidity:	20 - 80%, non-condensing

## INTERFACE

Communication Interface:	RS-232C serial interface
Data Output Format:	Asynchronous ASCII
Baud Rate:	4,800 to 38,400 bits/sec

## FORM

Paper Weights:	60 lb. - 100 lb. (90 - 148 g/m <sup>2</sup> )
Paper Size:	2.25" x 6" (5.7 x 15.2 cm) to 8.5" x 14" (21.6 x 35.6 cm)
Transport Speed:	15 in./second

## SOFTWARE

Operating Software:	Built-in form translation software translates mark information into application program-compatible data, permits user-defined edit checks and stores multiple form descriptions
---------------------	---

## OPTIONS

Printer:	Up to 100 characters
Bar Code Reader:	UPC/EAN/JAN, 3 of 9, Interleaved 2 of 5, Codabar, Code 128
Ink Reader:	Blue and black ball-point pens, markers and pencils
Utility Software:	ScanBook software generates form translation commands from user-defined descriptions
Dual Readhead:	Simultaneously reads both sides of a two-sided form.

Specifications are subject to change without notification.



Scantron Corporation, World Headquarters

1361 Valencia Avenue, Tustin, CA 92780 Toll free: (800) 722-6876, ext. 2600 Fax: 714-247-0010

www.scantron.com



*Scantron is counted on most for global leadership in data collection solutions, survey services and technical support and maintenance.*